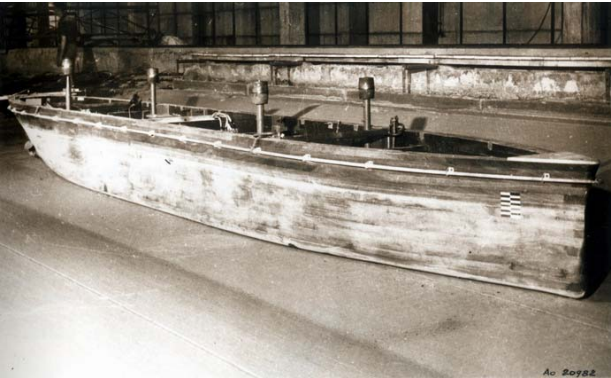

SOGREAH's SHIPS

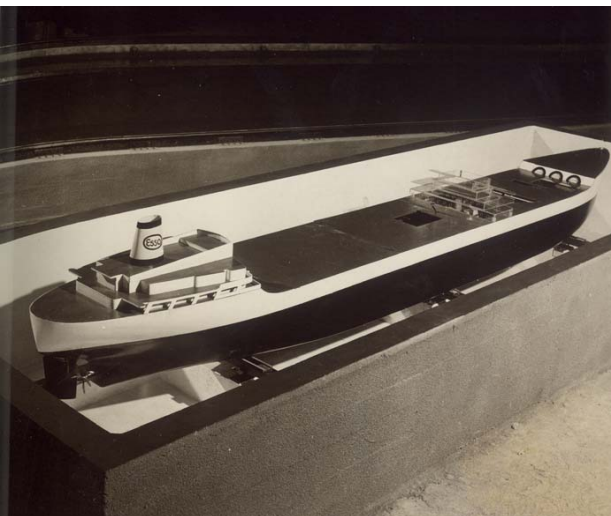
ILLUSTRATED



1953 – Probably Sogreah's first ship (at Laboratoire Dauphinois d'Hydraulique): the Sovac Comet, a 30 000 t tanker.



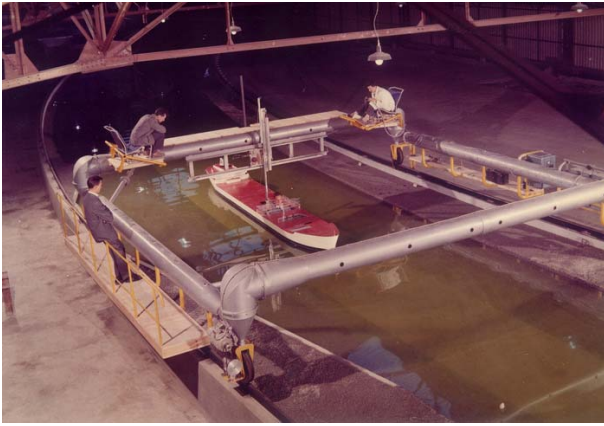
1954 – The Esso France, a 47 000 t tanker with, for the first time, a crew on board (to perform measurements).



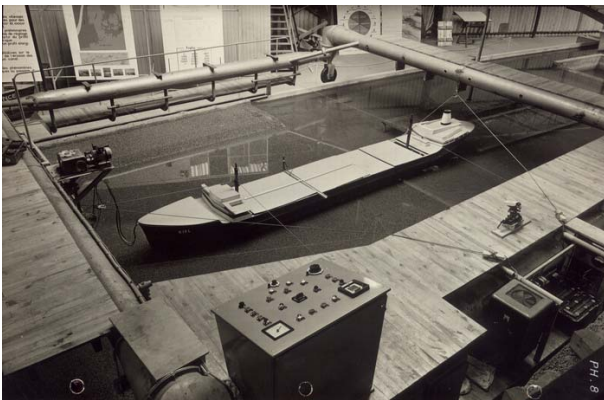
1958 – The Pembrokeshire, then prosaically named PR 1116, a 70 000 t tanker at scale 1/40, later changed into an 18 000 t tanker at scale 1/25.



model calibration



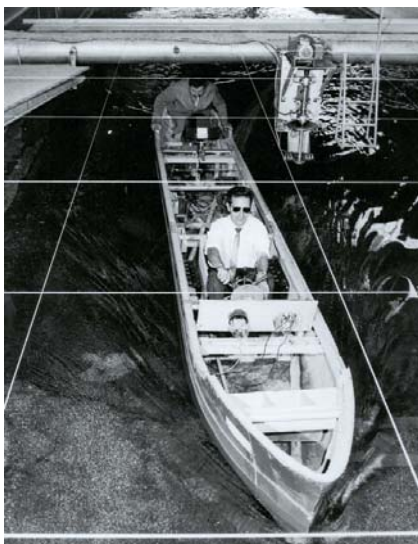
1960 – The Pembroke in the Suez Canal study: with 3 observers scrutinizing ...



1965 – The Pembroke is now named “Kiel” for the bank erosion study in the Kiel Canal. The model is self-propelled, but guided by cables.



1965 – Again in the Kiel Canal study, the Pembroke is now coupled to a dynamometer to measure forces on the ship.



1966 – The Pembroke once more, here being used for “psychological tests” aiming at convincing Esso to launch the Port Revel operation.

Front side and ...



... back side.



3rd October 1966 – Further psychological tests, now on the Lake of Revel.

In front of JP. Gamot (former CEO of Sogreah) the Brunsbüttel, which served in the Kiel Canal study in 1965.



The Pembroke convinces,



... leading to the first settlement at “Port Revel” ...



December 1966 – The lake is partly emptied and works begin in the “Terres Froides” (Cold Lands) ...





February 1967 – The Brittany model is well under construction: lots of manpower ...



March 1967 – Brittany's hull is ready.



a bulbous rubber bow ...



9th March 1967 – In the meantime, the contract is signed with Esso.



May 1967 – The Brittany arrives at Port Revel.



First manoeuvres in the Suez Canal.



June 1967 – The lake is ready.



The Berlin testing the canal



On **3rd July 1967** the centre is opened.



Winter 1969 – Forcing passage with a tanker on the frozen Lac de l'Abbaye (Jura, France).



June 2004 – The Labrador ice-breaker of 1969 still in use at Port Revel ...



1971 – The Europe performing tests for the Port of Antifer study.



1972 – The Gilda arrives with a Y- bow thruster installed in the bulb.



1974 – The Antifer arrives at Port Revel and is subjected to waves generated on the lake (still a unique feature in the world in 2005).



How deep is it here??
Waves are more impressive on the Berlin!



1977 – Arrival of the Ben Franklin LNG carrier at Port Revel.



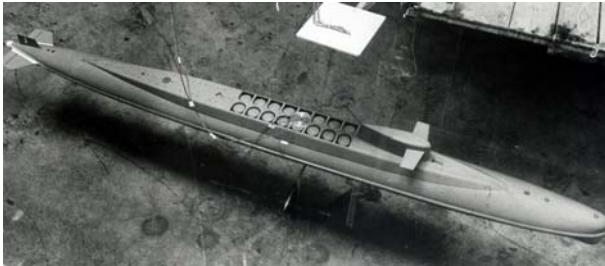
1978 – Mooring tests for Pointe Limboh (Cameroon) with gas and oil tankers at Sogreah's Laboratory.



1979 – Offshore study for PREUSSAG



1981 – Mooring study for an LNG carrier in the Port of Zeebrugge.



1982 – Testing of a French nuclear submarine at Sogreah's Laboratory.



1982 – The numerical simulator arrives ... It will progressively take over port access studies.



1989 – Study of navigation in silted channels at Sogreah's new laboratory in Pont de Claix.



1992 – Arrival of the Normandie container carrier.



2000 – Arrival of two escort tugs remote controlled by a tug captain.



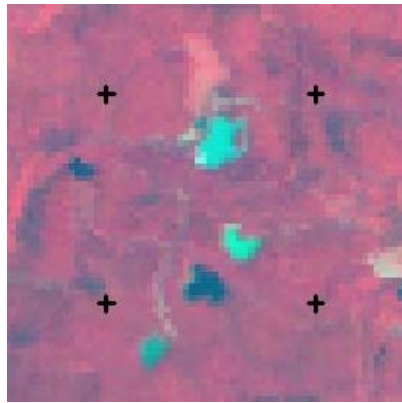
... and life goes on at Port Revel while the old ships retire at Pont de Claix.



The Europe: The pride of Revel's seamen



From the air ...



... from a satellite



in winter

or

in autumn

Port Revel is unique.

